

July 13, 2011

Mr. Winsome A. Lenfert  
Manager, Airports Division  
1701 Columbia Avenue  
College Park, GA 30337

Subject: FOIA Request Control No. 2011-006539(SO)

Dear Mr. Lenfert,

I have received the runway inspection records for the Memphis International Airport for the years 2003, 2004, and 2010. Thank you for your response.

I have questions I am submitting on a separate page that I would like to ask for your response to. You may return your responses to me at my address below.

Respectfully,

Guy Cobb

1419 Tree Haven Cove

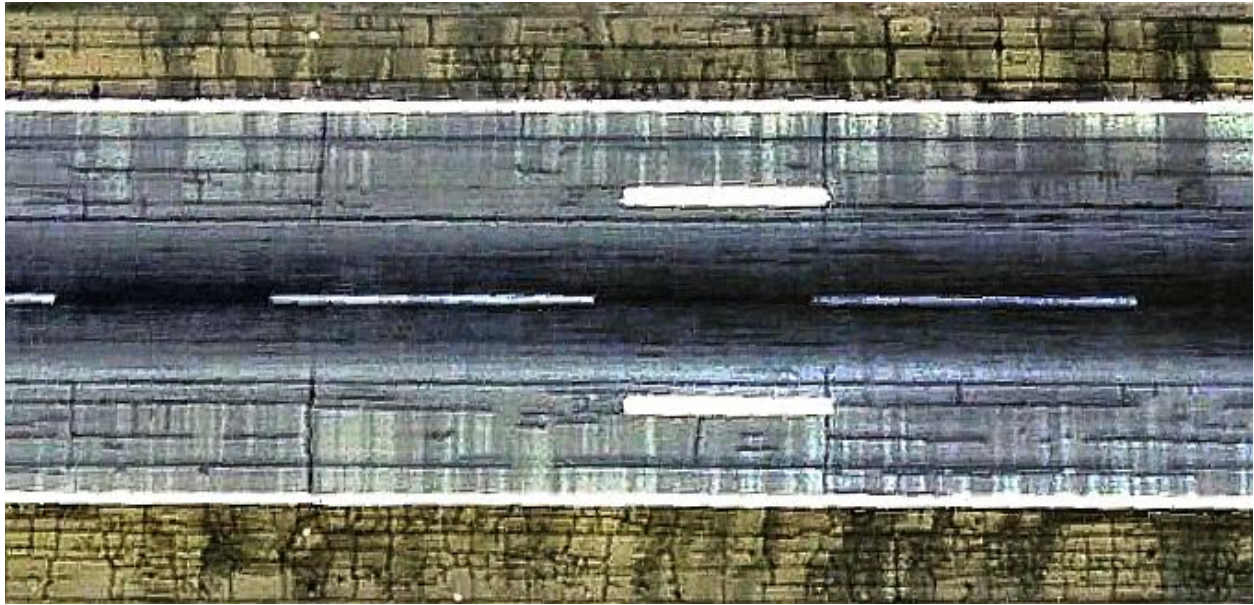
Cordova, Tennessee 38016

(901)598-1876

Memphis International Airport FAA Inspection Reports Questions

1. The Google Earth image below of Runway 27 was captured on February 28, 2003 and shows the location directly above the Hurricane Creek Tunnel. The Memphis Airport Authority's attorney, Sara Hall, confirmed for me that the two largest vertical fractures are the location where the runway was "open cut" in 1985 to install the tunnel.

Could you explain why the FAA's 2003 inspection record section 139.305 - .307 PAVED/UNPAVED AREAS makes no mention of the runways large fractures and cracks?



139.305 - .307 PAVED/UNPAVED AREAS			
1. Lips/Slopes	✓		
2. Holes	✓		
3. Cracks/Surface Variations	✓		
4. Debris/Contaminants	✓		
5. Compaction	✓		
6. Drainage/Ponding	✓		
7.			

This is the actual inspection report segment by inspector Randy Moseng

2. In the "Remarks – Narrative" section of the 2003 inspection report (see below), inspector Linda Berkowitz states that there was an:

"\* Actual crash during simulated alert. See attached info."

Was Ms. Berkowitz's attachment included with the inspection report? I can find no mention of the crash in the attachments sent to me. What crash is she referring to?

Remarks - Narrative


ASIG try to use BBA Aviation  
Table Top - excellent - fall to Jim  
\* Actual crash during simulated alert.  
See attached info!

3. Are these inspection records inclusive of all four of Memphis' runways or are they specific to a single runway?
4. What do the reports "Site No.'s" represent? What is the difference between site location 23097.A and 23094.A?
5. How often are the Memphis runways required to be inspected by the FAA? Could you explain why some inspections took three days and others took just one day. Why are there no inspection records for November 2004 and July 2010? (see list below):

Inspection Reports were received for the following dates:

- July 1, 2, 3, 2003
- November 12, 13, 2003
- June 8, 9, 10, 2004
- November 23, 24, 2009
- July 29, 2010

6. Would you please decipher the meanings of the following statements and acronyms included in these supplemental notes from the inspections:

Southwestern RMS  
  
Airport Fou  
NRAO Diagram 11/11/05 ✓  
MEM  
Paint-stains: Should be O.K.  
Fou - send Scott Sample  
REP - ✓  
Southwestern  
send contract for OTC clause to T. Wallace ✓  
- need sign plan revisions  
Rwy 36L-18R - MTRW H/S signs w/o location signs (on right)  
- M8, M6, M2, M5  
Check 18C - C2/C4/P - O.K. ✓  
Fuel - Swiss Air Farm - Deadman being bypassed  
- fixed on the slot w/new rope  
TWY E - no H/S sign on right 2 (add 18L-36 R/S2 to blank sign panel on S2  
Rwy 36L - is LOC in RSA  
FAA light - holders need to be moved - need portable stands - 36L (example)  
Rwy 27 end - RSA @ V1 - huge hole/depression  
JCS RWY 9 and 27 loc outside RSA?  
(1000' marker bar<sup>3</sup> behind it)  
TWY 5 - 9-27. enhanced mkg. peeling off  
NO - Non-Mount. boundary mkg. on signature Ramp  
No TWY edge mkg. @ JCS Hold on signature (East entrance)  
Install Non-Mount. Boundary mkg. on entire airport TWY C side  
TWY M3 - missing 13<sup>th</sup> (6') dash on enhanced mkg.  
M4 Full scale - Max 2008  
Tabletop - May 13<sup>th</sup>, 2010

IOU:

Send contact for updating chart info N65 Runy lengths data etc...

Surveillance

(MEM)

11/23 - 11/24 2009 Move inspection to May.

Send IO Quick Reference Guides to Conn. Send 50 to Thomas Send CD copy of Quick ref.

Runy 9-27

Check Thld bar + mvg spacing (30')

Lead off light alternating - check all exits

TWT centerline stripe spacing w/ Runy edge mvg.

LATHSO TWT IV - to begin Jan 16<sup>th</sup>

- LOA in place

- Acm revisions forthcoming

IOU Airport: - send Acm revisions

For Quick Ref. →

Add CAT A/cmt

TWT + Taxiway

Wright clearances

7. Is the FAA responsible for inspecting the Hurricane Creek Tunnel which supports Runway 27?
8. When an airport receives an “Unsatisfactory mark”, what happens? Is the airport required to correct the issue?

End of document